

# SHARP®

Be Original.

**BP50C26**  
**BP50C31**  
**BP50C36**

## Essentials Series Colour Document Systems



Simply Smarter Business



The Renaissance of Colour

# The New Colour Essentials Series from Sharp.

## Taking organizations to the future of business communication by helping them work simply smarter.

Designed to fit today's diverse workstyles, the new Essentials Series colour document systems enable workers to collaborate and share information seamlessly and securely throughout their office environment. Available enhanced cloud services such as Microsoft Teams makes it easy to streamline communication and boost productivity with hybrid workers.



### Easy-to-use Touchscreen

The easy-to-use Sharp touchscreen display is built on an award-winning design and delivers an accurate, responsive user experience, imperative for today's sophisticated workflows.

### Technology Focused on Efficiency

The Essentials Series leverages the latest technology to help users get their work done with ease and efficiency. Innovative features like multi-feed scan detection and enhanced auto skew correction ensure jobs come out right the first time, every time.

### Versatile Application Integration

Maximize productivity and collaboration with easy access to expanded cloud services, quickly connect with mobile devices to print and scan files.

### Leading Security

In today's hybrid working environments it's vital to protect endpoint devices from security threats, that is why the Essentials Series uses the latest security technology to help ensure your data remains safe.

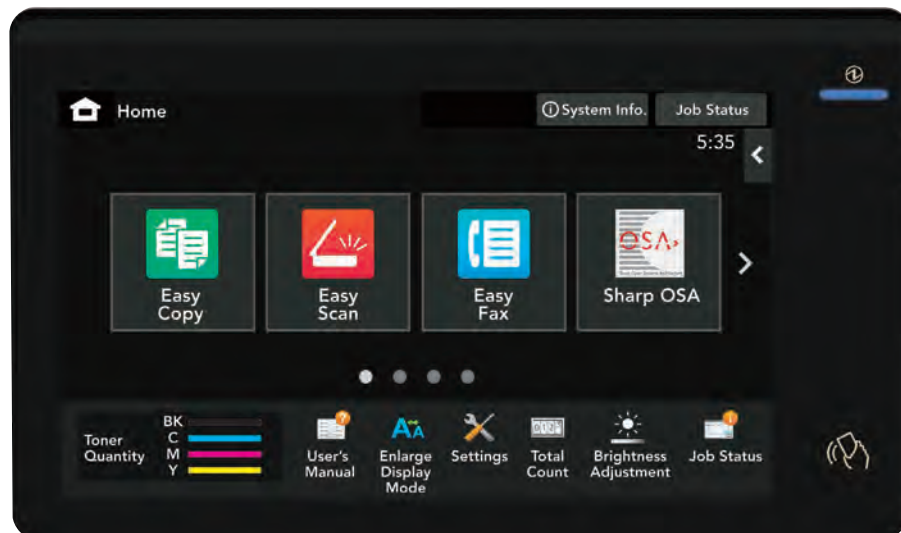
### Flexible Sleek Design

Elegant cabinet design with easy-roll casters, soft-close paper drawers and contemporary colour scheme make the Essentials Series a perfect fit for any office environment.



Smart features that enhance productivity and efficiency.  
Streamlined workflows that are safe, secure and fit today's diverse work styles.

- ✓ Work more efficiently
- ✓ Collaborate better with colleagues
- ✓ Secure your document workflows



10.1" (diagonally measured) customizable touchscreen display.



BP50C26 shown with Inner Folding Unit, Right Side Exit Tray, and 2-drawer Paper Deck.

- 100-sheet reversing single-pass feeder scans originals at speeds of up-to 80 images per minute.
- Flexible paper handling supports media up-to 300 gsm, allowing users to print on a wide variety of paper stock or media.
- New Inner Folding Unit option offers a variety of fold patterns, including tri-fold, z-fold and others.
- Smart controller design ensures MFP firmware is up-to date by periodically checking for updates.
- Energy Star 3.0 certified and offers among the lowest standby power consumption in the category.
- Enhanced touchscreen delivers an accurate, responsive user experience and provides easy access to features.
- Easily collaborate with hybrid workers with optional cloud services, such as Microsoft Teams, Google Drive™, Dropbox and others.
- Strong, multi-layered security such as system integrity check at startup, firmware attack prevention and optional Bitdefender® antivirus to help protect your data.\*
- Supports native Universal Print from Microsoft with optional PostScript Kit enabling businesses to easily adapt to this popular cloud service.
- Optional wireless LAN supports 5 GHz Wi-Fi for stable, high-speed network communication.
- Sharp OSA® Technology provides a secure and intuitive user experience for integrated workflows (optional).

\*Bitdefender® antivirus option available summer 2022.

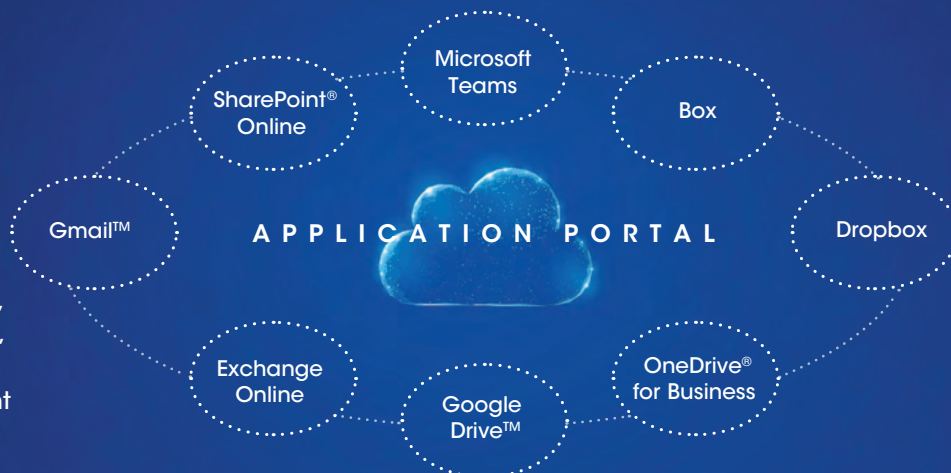


## Designed for today's individual workstyles. From media handling to workflow and collaboration, the new Essentials Series delivers the features businesses need to get the job done.

Sharp makes it easy for businesses to execute jobs quickly, leaving more time for the actual business at hand. Easily scan documents at speeds up-to 80 ipm using the 100-sheet reversing single-pass document feeder. Image processing technology and Artificial Intelligence (AI) can automatically adjust resolution, compression as well as detect original size and adjust for skewed documents when scanning. The award-winning, tablet style touchscreen delivers an accurate, responsive experience, while menu-driven Easy Modes offer fast, simple operation enabling users to get their copying and scanning tasks done in less time.

## Print and Share Documents Easily<sup>1</sup>

Seamlessly collaborate with colleagues even when they are working remotely. With Cloud Connect, businesses gain access to popular cloud services including Microsoft Teams, Google Drive, and others. The Sharp Application Portal, makes it easy for administrators to add new apps and update existing apps right from the MFP touchscreen.



**Integrate with Email Applications** In addition to native capability, the available **Email Connect** feature enables seamless scan-to-email integration with Microsoft Exchange/365 and Gmail™ user accounts, making it easy to identify the sender of scanned files.

**Intelligent Image Processing Options** Scan documents to popular file formats including Microsoft Word, PowerPoint and Excel, as well as Searchable PDF, Encrypted PDF and others. Direct Print the same file types from thumb drives, cloud applications and mobile devices.<sup>2</sup> **Adobe Embedded Print Engine** direct prints PDF files with greater speed and rendering accuracy.

### Flexible Printing Solutions

PCL 6 and available Adobe PostScript3 printing helps users speed through their work. The 128 GB solid state drive processes jobs quickly. **Serverless Print Release** enables users to print a job and release it from up-to eight supported models. Native Universal Print from Microsoft with optional PostScript kit eliminates the need for on-premises infrastructure, and enables IT to manage printers directly through a centralized portal.

<sup>1</sup> Some features require optional equipment and/or software.

<sup>2</sup> This function is enabled via Qualcomm DirectOffice technology.

# Smart·Connected·Secure

**Integrating technology and functionality.**

The New Colour Essentials Series document systems provide unsurpassed performance that simply adapts to your business needs.

## Reversing Single-Pass Feeder (RSPF)

100-sheet document feeder scans originals at speeds of up-to 80 images per minute.

## Smart Scan

Image processing technology and AI can automatically adjust resolution, compression, as well as detect original size and adjust for skew.

## Smart Touchscreen

Enhanced touchscreen is easy to use and delivers the responsiveness and accuracy users expect.

## Advanced Multi-layer Security

Leading security features plus optional Bitdefender antivirus provide enhanced protection against network intrusions.<sup>1</sup>

## Exceptional Image Quality

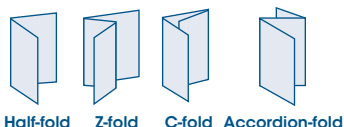
1,200 x 1,200 dpi resolution delivers razor-sharp text and graphics.

## Microsoft Friendly

Simplify workflow and enhance collaboration with Universal Print native integration and the optional Microsoft Teams connector.

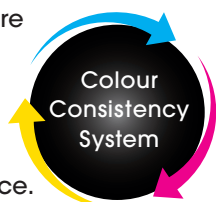
## Advanced Finishing

Sharp gives you a variety of high-performance finishers to choose from to help complete the job on time. New inner folding unit option offers four popular folding patterns.



## Sharp's Colour Consistency System

Advanced auto-calibration helps ensure colour output is always at peak performance.



## Flexible Paper Handling

Feed up-to 300 gsm media through the paper drawers and supports up-to 12" x 18" output size.

## Large Capacity Cassette

Available large capacity cassette offers an additional 3,000-sheet capacity for a maximum on-line paper capacity of 6,300 sheets.

<sup>1</sup>Bitdefender® antivirus option available summer 2022.



**Collaborate on-the-go with quick access to mobile devices.**  
The Essentials Series makes it easy to share data with tablets and smartphones even in busy office environments.



#### Print with Popular Mobile Technologies

With the optional PostScript kit, the Essentials Series supports printing using popular mobile technologies such as Apple AirPrint®, and Android printing with the Sharp Print Service plug-in.

#### Optional Wireless Networking

Print directly to the MFP from mobile devices without interfering with the corporate network! 5 GHz technology and WPA3 Encryption deliver fast, reliable data that is well protected from malicious intruders.

#### Scan and Print with Sharpdesk Mobile

With Sharpdesk Mobile, a free downloadable app for most mobile devices, users can quickly scan and print files from tablets and smartphones.<sup>1</sup>



**Centralized device management helps ensure optimal uptime.**  
Seamlessly connect technology and drive collaboration with easy access solutions.



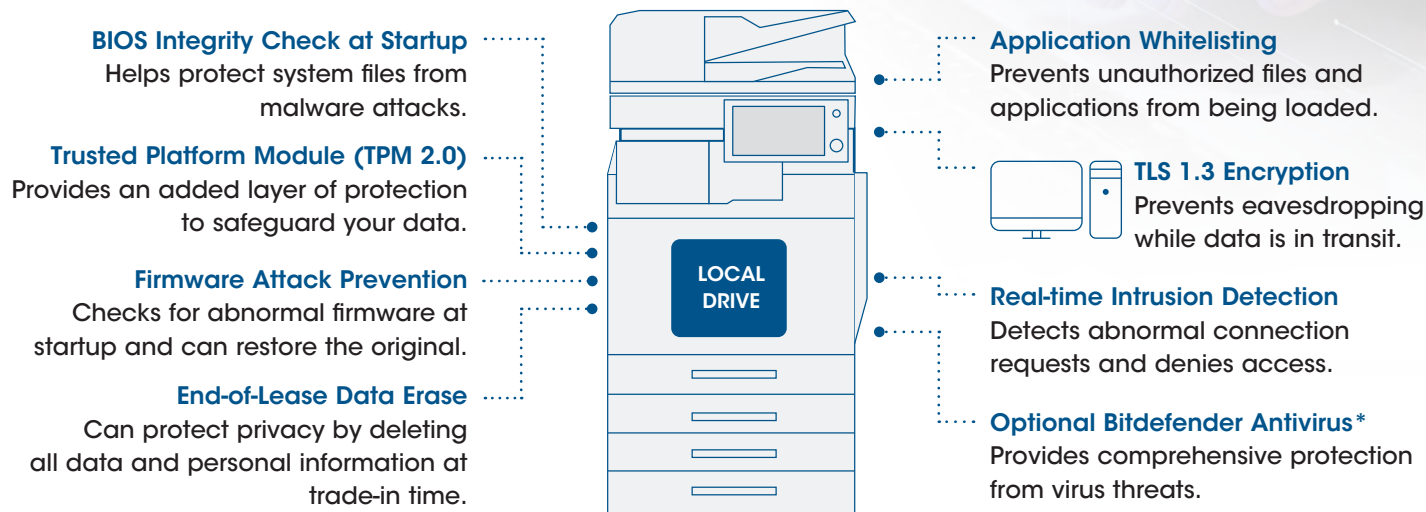
#### Seamless Device Management

On premises, Sharp Remote Device Manager (SRDM) simplifies device monitoring and management. Event-driven alerts help maximize uptime. SRDM also offers centrally managed security settings, pre-configured driver distribution, energy save settings and more. SRDM is available as a free download.<sup>1</sup>

<sup>1</sup> Go to [www.sharp.ca](http://www.sharp.ca) for a list of supported equipment and operating systems.

## Multi-layer security features to help businesses stay a step ahead of hackers.

The new Essentials Series utilizes leading security technology to help organizations protect their data and meet regulatory requirements.



- **Active Directory (AD) Integration** Enables the MFP to join the network domain as a computer, making it a trusted device.
- **Supports AD Group Policy** Allows administrators to centrally manage select security settings and enforce their own policy.
- **256-bit AES Encryption** Ensures data that resides on the local drive is protected.
- **Protects Access to the Device** IP/MAC address filtering, 802.1x authentication and port control protect access to the device.
- **Protects Data in Transit** IPsec and SMB 3.1.1 protocols, as well as TLS 1.3 use data encryption to protect data.
- **WPA3 Wi-Fi Encryption** Supports the latest data encryption standard for wireless networking security.
- **Authority Groups** Enables administrators to define various groups for different users, which can limit or restrict access to specific features.
- **Optional Data Security Kit** Offers expanded security functions and restricted access features for highly sensitive environments.



\*Bitdefender® antivirus option available summer 2022.

## Environmental Commitment

Sharp is committed to environmental sustainability and corporate responsibility.

### A Responsible Approach to Design

Sharp MFPs adhere to the Sharp Corporation Green Products Guidelines, which requires designing products that consume less power, use recycled materials and reduce materials used in packaging.

### Toner Recycling Program

Sharp offers zero-waste-to-landfill recycling for Sharp consumables at no cost to our customers and encourages them to recycle their Sharp toner cartridges by providing them with a pre-paid recycling kit for return to our facility. Please visit [www.sharp.ca/en/toner-recycling](http://www.sharp.ca/en/toner-recycling) to learn more.

### Environmental Commitment

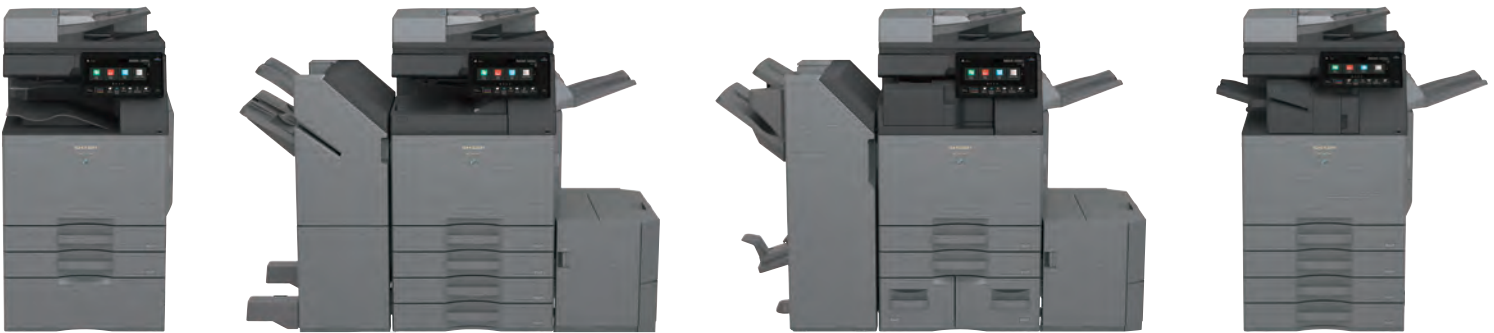
The Sharp Essentials Series models are ENERGY STAR® 3.0 qualified and RoHS compliant. These products also have one of the lowest TEC values in their category as well as one of the lowest stand-by power consumption ratings. Sharp MFPs are EPEAT® registered.

For more information about Sharp environmental leadership including information about energy efficient products, electronics, or toner cartridge recycling, please visit [www.sharp.ca/en/environmental-policy](http://www.sharp.ca/en/environmental-policy) to learn more.



## The New Colour Essentials Series. Simply Smarter.

Designed to fit today's hybrid workstyles, offering intelligent features and connectivity that enable office workers to collaborate with colleagues seamlessly and securely even when they are working remotely. To learn more, visit [www.sharp.ca](http://www.sharp.ca)



**SHARP**  
Be Original.

SHARP ELECTRONICS OF CANADA LTD.  
335 Britannia Road East,  
Mississauga, Ontario L4Z 1W9  
1-800-567-4277 • [www.sharp.ca](http://www.sharp.ca)

Printed in Canada.  
OSG-OS-BPE-CR5-E-PDF-06/2022

Design and specifications subject to change without notice. Sharp, Sharp OSA, Sharpdesk, and all related trademarks are trademarks or registered trademarks of Sharp Corporation and/or its affiliated companies. Microsoft, Active Directory, Excel, Microsoft 365, Microsoft Teams, OneDrive, PowerPoint, SharePoint, Windows, and Windows Server are trademarks of the Microsoft group of companies. Android, Gmail, and Google Drive are trademarks or registered trademarks of Google LLC. Adobe and PostScript are either registered trademarks or trademarks of Adobe in the US and/or other countries. Qualcomm DirectOffice is a product of Qualcomm Technologies, Inc. and/or its subsidiaries. Qualcomm is a trademark of Qualcomm Incorporated, registered in the United States and other countries. DirectOffice is a trademark of CSR Imaging US, LP, registered in the United States and other countries, used with permission. AirPrint is a trademark of Apple Inc. All other trademarks are the property of their respective owners.





## Essentials Series Colour Document Systems

**Designed for today's individual workstyles.**  
From media handling to workflow and collaboration, the new Essentials Series delivers the features businesses need to get the job done.

The new Essentials Series Colour Document Systems enable workers to collaborate and share information seamlessly and securely. Enhanced cloud services such as Microsoft Teams makes it easy to streamline communication and enhance productivity with hybrid workers.

**Easy-to-use Touchscreen:** Award-winning design that delivers an accurate, responsive user experience, imperative for today's sophisticated workflows.

**Technology Focused on Efficiency:** Innovative features like enhanced auto skew correction ensure jobs come out right the first time, every time.

**Versatile Application Integration:** Easy access to expanded cloud services and quickly connect with mobile devices.

**Leading Security:** The Essentials Series uses the latest security technology in today's hybrid working environments to protect endpoint devices from security threats.



10.1" (diagonally measured) customizable touchscreen display.



**Pivoting Touchscreen** offers the viewing angle for any use instantly.



**New Inner Folding Unit option** offers a variety of fold patterns, including tri-fold, z-fold and others.



**100-sheet RSPF** scans documents at up-to 80 images per minute.

- **100-sheet RSPF Reversing Single-Pass Feeder** scans up-to 80 images per minute.
- Flexible paper handling supports **media up-to 300 gsm**, allowing users to print on a wide variety of paper stock or media.
- **Smart controller design** ensures MFP firmware is up-to date by periodically checking for updates.
- Easily scan documents to Microsoft and PDF file formats, or **direct print** these file types from thumb drives and cloud applications with **optional expansion kits**.
- **Energy Star 3.0 certified** offers among the lowest standby power consumption in the category.
- **Enhanced touchscreen** delivers an accurate, responsive user experience and provides easy access to features.
- Collaborate with hybrid workers using **optional cloud services**, such as Microsoft Teams, Google Drive™, Dropbox and others.
- Supports native **Universal Print from Microsoft**, with optional PostScript 3 kit enabling businesses to easily adapt to this popular cloud service.
- Strong, **multi-layered security** includes system integrity check at startup, firmware attack prevention and optional Bitdefender® antivirus to help protect your data.\*
- Wireless LAN supports 5 GHz Wi-Fi for stable, **high-speed network communication** (optional).
- **Sharp OSA® Technology** provides a secure and intuitive user experience for integrated workflows (optional).

\*Bitdefender® antivirus option available summer 2022.

# BP50C26/BP50C31/BP50C36 Specifications

## Main Specifications

<b>BP50C26</b> <b>BP50C31</b> <b>BP50C36</b> <b>BP50C45</b>	Base models include multitasking controller, 100-sheet RSFP, PCL® 6 printing system, network scanning, auto duplexing, 1 x 550-sheet paper drawer, 100-sheet bypass tray. Developer included.
<b>Type</b>	Colour multi-function digital document system
<b>Display</b>	10.1" (diagonally measured) colour dot matrix high-resolution touch panel filling display, 1,024 x 600 dots (W-SVGA)
<b>Functions</b>	Copy, print, network print, network scan, document filing and fax <sup>1</sup>
<b>Copy System</b>	Dry electrostatic transfer/Dual component developer/Magnetic brush development/OPC drums/PAD fusing/White LED exposure
<b>Originals</b>	Sheets and bound documents
<b>Max. Original Size</b>	11" x 17"
<b>Output Size</b>	Min. 5.5" x 8.5", Max. 12" x 18"
<b>Copy Speed</b>	26/31/36/45 ppm Mono/Colour (8.5" x 11")
<b>Multiple Copy</b>	Max. 9,999 copies
<b>First Copy Time</b>	<b>BP50C26</b> <b>BP50C31</b> <b>BP50C36</b>
(In Seconds) <sup>2</sup>	Mono Colour Mono Colour Mono Colour
Platen Glass:	6.5 7.6 5.6 7.6 4.6 6.5
RSFP:	8.1 9.7 7.6 9.7 7.6 9.7
<b>Warm Up Time</b>	29 seconds (from main power switch on), 18 seconds (from [Power] button on)
<b>Magnification</b>	25% to 400% in 1% increments; (with RSFP 25%-200%)
<b>Original Feed Scan Speed</b>	100-sheet RSFP with original size detection Copy: Up-to 80 ipm (Mono/Colour) Scan: Up-to 80 ipm (Mono/Colour)
<b>Original Sizes</b>	5.5" x 8.5", 8.5" x 11", 8.5" x 11" R, 8.5" x 14", 11" x 17"
<b>Paper Capacity</b>	Standard: 650 Sheets/Maximum: 6,300 Sheets
<b>Paper Feed System</b>	Standard: (1) paper drawer 550 sheets (letter/legal/ledger/stmt. size) or Up-to 50 envelopes (max. height: 25 mm), 100-sheet (or 20 envelope) bypass tray. Optional: Single, double, or triple paper drawer(s) (550, 1,100, or 1,650 sheets), split tandem paper drawers 2,100 sheets (letter) + (1) 550-sheet paper drawer (letter/legal/ledger/statement size). Paper drawers: 18 lb. bond to 110 lb. cover. Drawer 1: 20-24 lb. bond or Monarch/Com-9 envelopes. Split Tandem Drawers: 18 lb. bond to 28 lb. bond or plain, pre-printed, recycled, pre-punched, letterhead and colour paper. Bypass tray: 16-28 lb. bond (plain paper), 13-16 lb. bond (thin paper), 28 lb. bond-110 lb. cover (heavy paper), tab paper (letter) and Monarch/Com-10 envelopes. Also label, gloss, pre-printed, recycled, pre-punched, letterhead and colour paper or OHP film.
<b>Paper Weights and Types</b>	
<b>Duplexing</b>	Standard automatic duplex copying and printing
<b>CPU Interface</b>	Up-to 1.6 GHz Intel processor RJ-45 Ethernet (10/100/1000 Base-T), USB 2.0: 1 host port (front), USB 3.0: 2 host ports; wireless 802.11 a/b/g/n/ac (option)
<b>Memory</b>	Standard 5 GB copy/print (shared)
<b>Solid State Drive</b>	128 GB, 512 GB (option)
<b>Copy Resolution</b>	Scan: 600 x 600 dpi (Mono/Colour). Output: Up-to 1,200 x 1,200 dpi (Mono), Up-to 600 x 600 dpi (Colour)
<b>Colour Modes</b>	Auto Colour Selection (ACS), Full Colour Mode, Monochrome (B/W)
<b>Exposure Control Modes</b>	Automatic, Text, Text/Photo, Text/Printed-Photo, Printed-Photo, Photo, Map, Pale-Colour Document. Settings: Auto or 9 step manual
<b>Half-tone</b>	256 gradations/2 levels (monochrome)
<b>Copy Features</b>	Scan-Once Print-Many, electronic sorting, offset-stacking, Auto Colour Selection (ACS), Auto Paper Selection (APS), Auto Magnification Selection (AMS), Auto Tray Switching (ATS), black-white reversal, blank page skip, book copy, book divide, card shot, centre erase, centring, cover pages, dual page copy, edge erase, image edit, image preview, insert pages, job build, job programs, margin shift, mirror image, mixed size original, multi-page enlargement, original count, pamphlet style, proof copy, repeat layout, reserve copy, rotated copy, stamp, stamp custom image, suppress background, tab copy, tab-paper insertion, tandem copy, toner save mode, transparency inserts, watermark, 2-in-1 / 4-in-1 / 8-in-1 multi shot

## Main Specifications (continued)

<b>Account Control</b>	Up-to 1,000 users. Supports user-number authentication via local, LDAP and Active Directory for copy, print, scan and document management
<b>Output Tray Capacity</b>	Centre Exit Tray (Main): 400 sheets (face down) Job Separator (Upper Tray): 100 sheets (face down) Right Side Exit Tray: 120 sheets (face down)
<b>Cloud Supported Services</b>	Google Drive, Box, OneDrive for Business, SharePoint Online, Dropbox, Gmail™, Microsoft Teams
<b>Network Protocols</b>	TCP/IP (IPv4, IPv6, IPsec), HTTP/HTTPS, IPP/IPP-SSL/TLS, FTP/FTPS, SNMPv3, SMTP/SMTP-SSL, POP3/POP3-SSL, LDAP/LDAP-SSL, 802.1x for Windows and Unix. <sup>1</sup>
<b>Network and Data Security</b>	Includes IP/MAC address filtering, protocol filtering, port control, user authentication, (local/LDAP/Active Directory), WPA3 wireless, TLS 1.3 Encryption, Kerberos support <sup>1</sup>
<b>Firmware Management</b>	Flash ROM with local (USB), network update capability and firmware update 1 to N with Sharp Remote Device Manager (available for download)
<b>Device Setup</b>	Web-based management with user/admin level login
<b>Service/Functions</b>	Remote Front Panel, remote access to service logs and click counts
<b>Accessibility Features</b>	Free stop tilting front panel, adjustment of key touch sound and speed, document feeder free stop, job programs, remote front panel, universal grip for paper trays, disable screen timeout
<b>Environmental Standards</b>	International Energy Star Program Ver. 3.0, European RoHS, Blue Angel (RAL-UZ205), EPEAT Gold
<b>Power Source</b>	110-127 V AC, 60 Hz, 15 A Receptacle
<b>Consumption</b>	1.5 kW or less
<b>Weight</b>	Approx. 187 lbs.
<b>Dimensions</b>	Approx. 24" (w) x 26" (d) 33" (h)
<b>Network Printing System</b>	
<b>PDL</b>	Standard PCL 6, optional Adobe PostScript 3
<b>Resolution</b>	1,200 x 1,200 dpi
<b>Print Speed</b>	26/31/36/45 pages per minute (8.5" x 11")
<b>Print Drivers</b>	Windows 8.1, Windows 10, Windows 11, Windows Server 2012/2016/2019, Windows PPD, Mac® OS (including 10.10 to 12), UNIX®, Linux®, Universal Print (native)
<b>Mobile Printing<sup>1</sup></b>	Android™ printing framework (Sharp Print Service Plugin), Sharpdesk Mobile, AirPrint®
<b>Print Features</b>	Auto configuration, serverless print release, chapter inserts, confidential print, continuous printing, custom image registration, document control, document filing, duplex printing, electronic sorting, form overlay, hidden pattern print, image rotation, job bypass print, job retention, layout print, margin shift, multiple pamphlet, network tandem print, N-up printing, offset stacking, page interleave, pamphlet style, poster print, proof print, print and send, tab paper print, tab printing, transparency inserts, tray status, user authentication single sign-on, watermarks, zoom print
<b>Direct Printing</b>	File Types: TIFF, JPEG, PCL, PRN, TXT, and PNG. Optional: PDF, Compact PDF, Encrypted PDF, PS, DOCX, XLSX and PPTX. Methods: FTP, SMB, Web page, Email and USB memory. Adobe Embedded Print Engine support for PDF file formats.
<b>Resident Fonts</b>	80 outline fonts (PCL), 139 fonts (PS) (option)
<b>Interface</b>	RJ-45 Ethernet 10/100/1000 Base-T, USB 2.0/3.0, optional Wireless 2.4/5 GHz
<b>Operating Systems and Environments</b>	Windows 8.1, Windows 10, Windows 11, Windows Server 2012/2016/2019, Chrome OS™, OS X 10.10 - macOS 12, Unix®, Linux®, Citrix®, and SAP device types <sup>1</sup>
<b>Printing Protocols</b>	LPR, IPP, IPPS, Raw TCP (port 9100), FTP, POP3, POP3S, HTTP, HTTPS, and LPR and LPD for Unix
<b>Network Scanning System</b>	
<b>Scan Modes</b>	Standard: Colour, monochrome, greyscale
<b>Max. Original Size</b>	11" x 17"
<b>Optical Resolution</b>	600 dpi
<b>Output Modes</b>	600 dpi, 400 dpi, 300 dpi, 200 dpi, 150 dpi, 100 dpi

## Network Scanning System (continued)

<b>Image Compression</b>	Monochrome Scanning: Uncompressed, G3 (MH), G4 (MR/MMR) Colour/Greyscale: JPEG (high, middle, low) Internet Fax mode: MH/MMR (option)
<b>Image Formats</b>	Monochrome: TIFF, PDF, PDF/A, Encrypted PDF, XPS, Searchable PDF, DOCX, XLSX, PPTX, TXT, and RTF. Colour/Greyscale: TIFF, JPEG, PDF, PDF/A, Compact PDF, Encrypted PDF, XPS, Searchable PDF, DOCX, XLSX, PPTX, TXT, and RTF. Internet Fax: TIFF-FX, TIFF-F, TIFF-S <sup>1</sup>
<b>Scan Destinations</b>	Email, Desktop, FTP, Folder (SMB), USB, and RTF. Internet Fax: TIFF-FX, TIFF-F, TIFF-S <sup>1</sup>
<b>One-touch Group Destinations</b>	Up-to 2,000 (combined scan destinations)
<b>Destinations Programs</b>	Up-to 500 (combined)
<b>Max. Jobs</b>	Up-to 100
<b>Email Connect</b>	Standard Gmail connector, standard Exchange connector
<b>Scanning Protocols</b>	HTTP/HTTPS, FTP/FTPS, SMTP/SMTP-SSL/ESMTP, SMB, POP3, LDAP, S/MIME
<b>Software<sup>1</sup></b>	Sharpdesk Mobile (download)
<b>Optional Equipment</b>	
<b>BP70ABD</b>	Deluxe Copier Cabinet Base (available summer 2022)
<b>BPDE12</b>	Stand/1 x 550-sheet Paper Drawer
<b>BPDE13</b>	Stand/2 x 550-sheet Paper Drawers
<b>BPDE14</b>	Stand/3 x 550-sheet Paper Drawers
<b>BPDE15</b>	Stand/1 x 550 + 2,100-sheet Split Tandem Paper Drawers
<b>BPCL10</b>	3,000-sheet Large Capacity Cassette (letter, requires BPDE12/DE13/DE14/DE15)
<b>MXLT10</b>	Long Paper Feeding Tray
<b>BPFN11</b>	50-sheet Staple Inner Finisher
<b>BPFN13</b>	1K Stacking 50-sheet Staple Finisher
<b>BPFN14</b>	1K Stacking 50-sheet Staple/ Saddle-Stitch Finisher
<b>BPFN15</b>	3K Stacking 65-sheet Staple Finisher
<b>BPFN16</b>	3K Stacking 65-sheet Staple/ Saddle-Stitch Finisher
<b>BPFD10</b>	Inner Folding Unit
<b>BPRB10</b>	Paper Pass Unit (required for BPFN13/14/15/16)
<b>MXPN14B</b>	3-Hole Punch Unit (requires BPFN11)
<b>MXPN15B</b>	3-Hole Punch Unit (requires BPFN13/14)
<b>MXPN16B</b>	3-Hole Punch Unit (requires BPFN15/16)
<b>MXSCX1</b>	Staple Cartridge for BPFN11/FN13
<b>ARSC2</b>	Saddle-Stitch Staple Cartridge for BPFN14
<b>MXSC11</b>	Staple Cartridge for BPFN15/FN16
<b>MXSC12</b>	Saddle-Stitch Staple Cartridge for BPFN16
<b>BPTR12</b>	Right Side Exit Tray
<b>MXTR20N</b>	Job Separator Tray
<b>BPTU10</b>	Centre Exit Tray
<b>BPUT10</b>	Utility Table
<b>BPEB10</b>	Wireless LAN Adapter (includes Bluetooth)
<b>MXEB19L</b>	Compact PDF Kit
<b>MXEB20L</b>	OCR Expansion Kit
<b>BPFX11</b>	Fax Expansion Kit
<b>MXFWX1L</b>	Internet Fax Expansion Kit
<b>MXPF10</b>	Bar Code Font Kit
<b>MXPK13L</b>	Adobe PostScript 3 Kit
<b>MXPU10L</b>	Direct Print Expansion Kit
<b>ARSU1</b>	Stamp Unit (requires ARSV1 Stamp Cartridge)
<b>ARSV1</b>	Stamp Cartridge
<b>MXAMX1L</b>	Application Integration Module
<b>BPAM10L</b>	Application Communications Module
<b>BPAM11L</b>	External Account Module
<b>BPSP10</b>	High Capacity SSD (512 GB)
<b>BPVD10L</b>	Virus Detection Kit (available summer 2022)
<b>BPRF12UL</b>	Data Security Kit
<b>DVENDFSV</b>	Generic Vendor Interface Kit
<b>Supplies</b>	
<b>BPNT70BA</b>	Black Toner Cartridge
<b>BPNT70CA</b>	Cyan Toner Cartridge
<b>BPNT70MA</b>	Magenta Toner Cartridge
<b>BPNT70YA</b>	Yellow Toner Cartridge
<b>BPNV70BA</b>	Black Developer
<b>BPNV70SA</b>	Cyan/Magenta/Yellow Developer
<b>BPDR70SA</b>	Drum

<sup>1</sup> Some features require optional equipment. See your local dealer.

<sup>2</sup> May vary depending on product configuration, machine settings and operating and/or environmental conditions.



# SHARP®

## Be Original.

SHARP ELECTRONICS OF CANADA LTD.  
335 Britannia Road East,  
Mississauga, Ontario L4Z 1W9  
1-800-567-4277 • [www.sharp.ca](http://www.sharp.ca)

Design and specifications subject to change without notice. Sharp, Sharp OSA, Sharpdesk, and all related trademarks are trademarks or registered trademarks of Sharp Corporation and/or its affiliated companies. Microsoft, Active Directory, Excel, Microsoft 365, Microsoft Teams, OneDrive, PowerPoint, SharePoint, Windows, and Windows Server are trademarks of the Microsoft group of companies. Android, Gmail, and Google Drive are trademarks or registered trademarks of Google LLC. Adobe and PostScript are either registered trademarks or trademarks of Adobe in the US and/or other countries. Qualcomm DirectOffice is a product of Qualcomm Technologies, Inc. and/or its subsidiaries. Qualcomm is a trademark of Qualcomm Incorporated, registered in the United States and other countries. DirectOffice is a trademark of CSR Imaging US, LP, registered in the United States and other countries, used with permission. AirPrint is a trademark of Apple Inc. All other trademarks are the property of their respective owners.

Printed in Canada.  
OSG-OS-BPE-CR5-S-E-PDF-06/2022